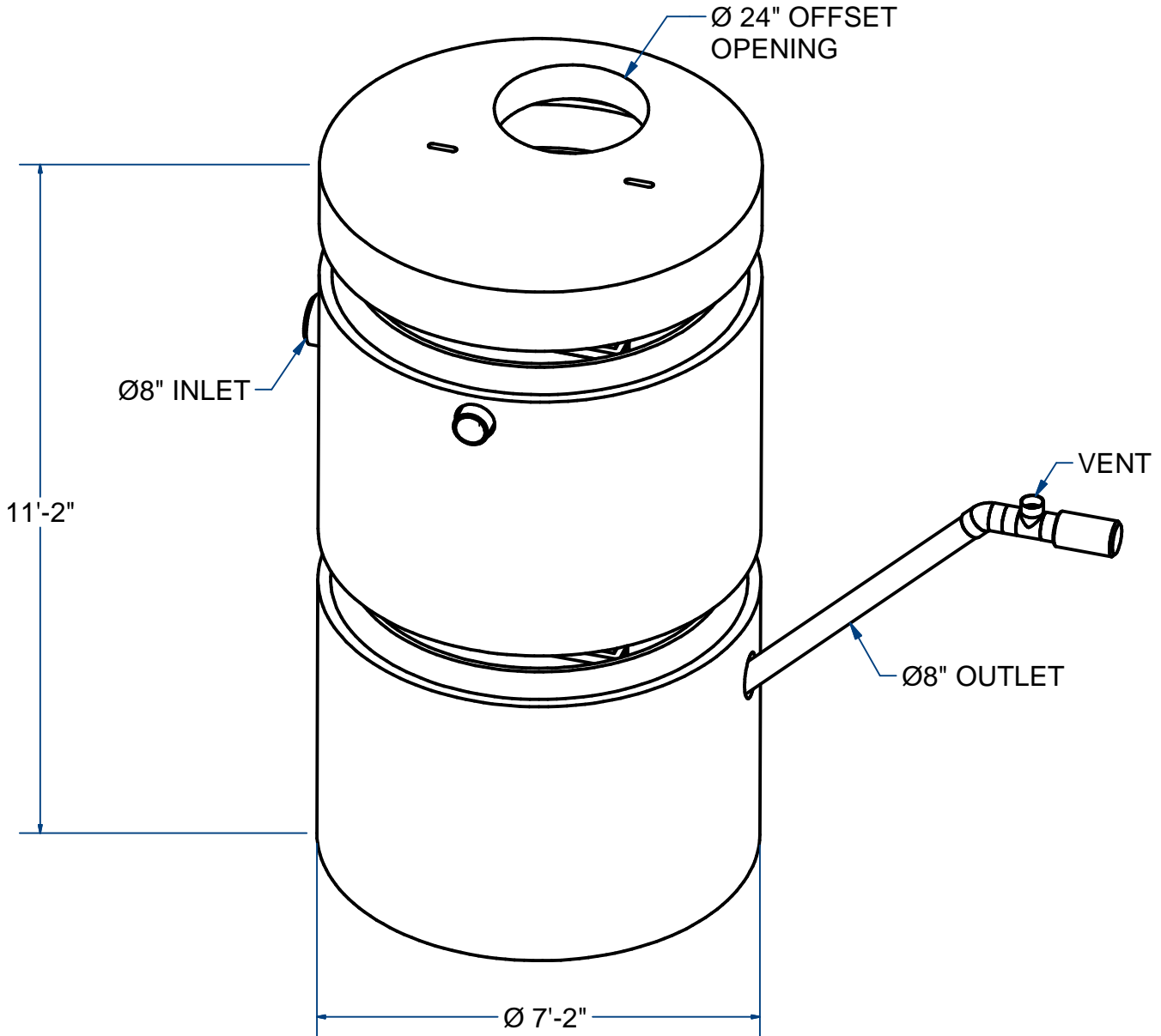


NOTES:

1.) FOLLOWS CODE CMR 248 10.0



MASS GAS & OIL SEPARATOR

(6') 72" ID

H2O

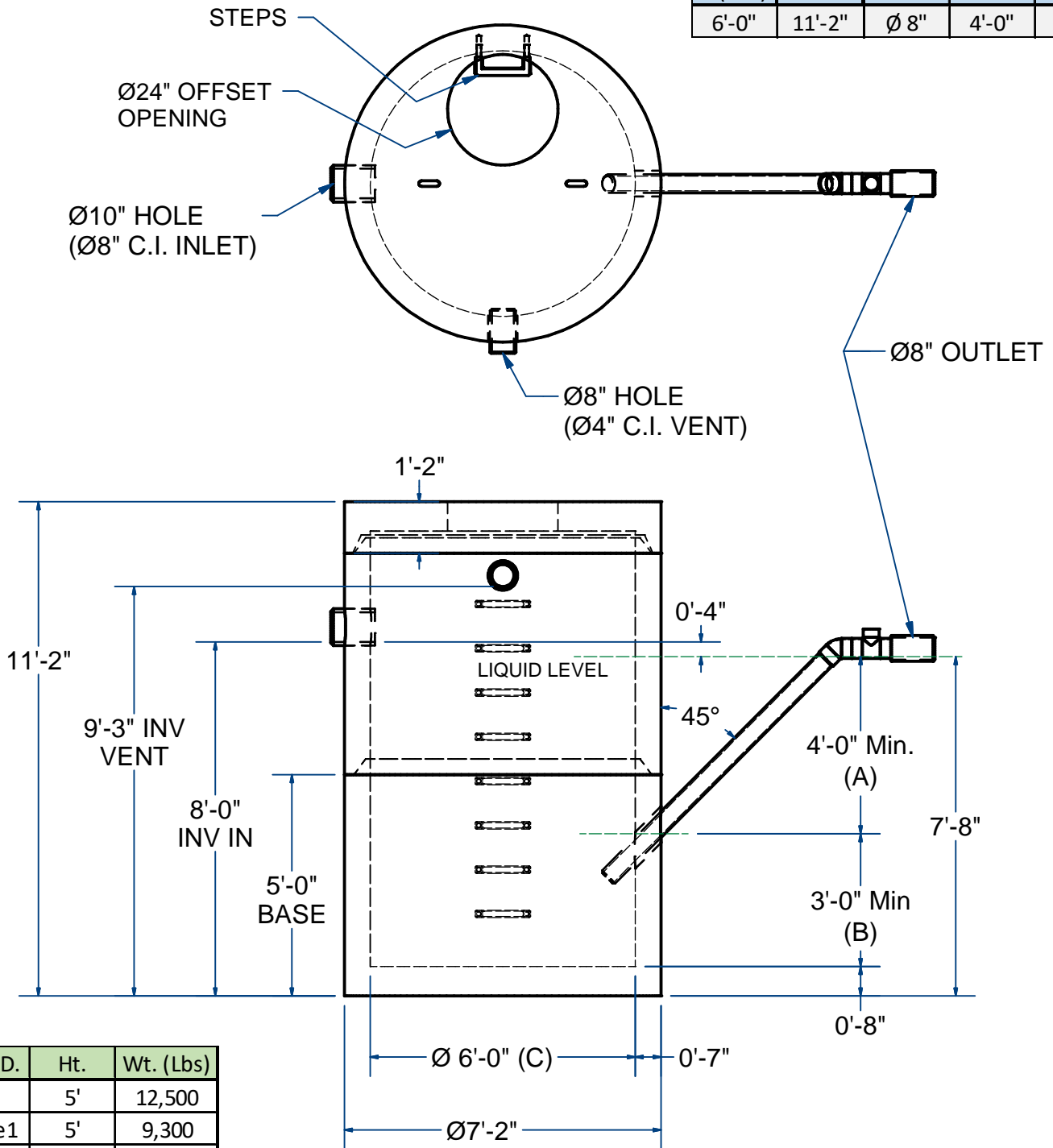
ACME-SHOREY

PRECAST CONCRETE PRODUCTS

NOTES:

- 1.) SEAM SEALED WITH FLEXIBLE BUTYL RUBBER SEALANT.
- 2.) ALL PIPE PENETRATIONS TO BE SEALED WITH HYDRAULIC CEMENT.
- 3.) INVERTS ARE TO ID PIPE SIZE
- 4.) FOLLOWS CODE 248 CMR 10.0

C (I.D.)	HEIGHT	INLET	A	B
6'-0"	11'-2"	Ø 8"	4'-0"	3'



Sct 6'I.D.	Ht.	Wt. (Lbs)
Base	5'	12,500
Sleeve1	5'	9,300
Flat Top	14"	3,200
		25,000

NAME: 6' MASS GAS & OIL SEPARATOR

H20

ITEM# 72MGOS11

Concrete Minimum Strength: 5,000 p.s.i. at 28 days
 Steel Reinforcement: ASTM A615, Grade 60
 Design Loading: standard units - AASHTO - H20

WEIGHT 25,000 Lbs

C

DATE: 10-3-20