

# ACME-SHOREY

PRECAST CONCRETE PRODUCTS

WWW.ACME-SHOREY.COM

PHONE (508) 548-9607

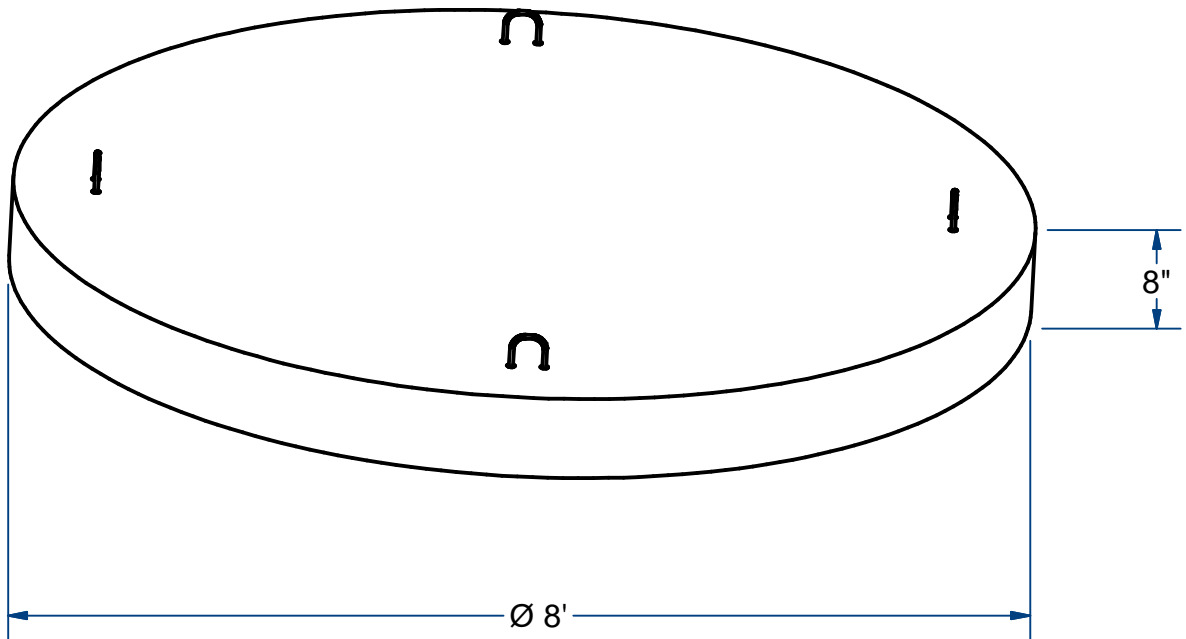
FAX (508) 548-1664

CARVER, MA  
334 TREMONT STREET

HARWICH, MA  
36 GREAT WESTERN ROAD

NOTES:

1.) USED WITH BIOCLERE MODEL 24/30



## BIOCLERE MOUNTING PAD 8'OD

FOR PROCESS INFO  
PLEASE CONTACT:



Bioclere technology  
phone: +44 (0) 1252 792 688  
sales@bioclere.co.uk  
www.bioclere.co.uk

8" THK

H20

ITEM# BCP82

Wt. 6,300 Lbs

14-8.2

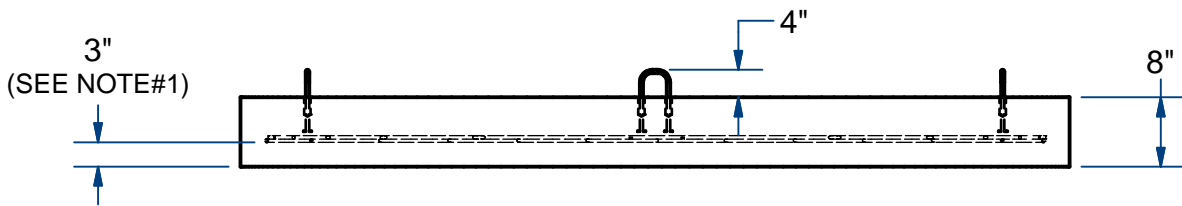
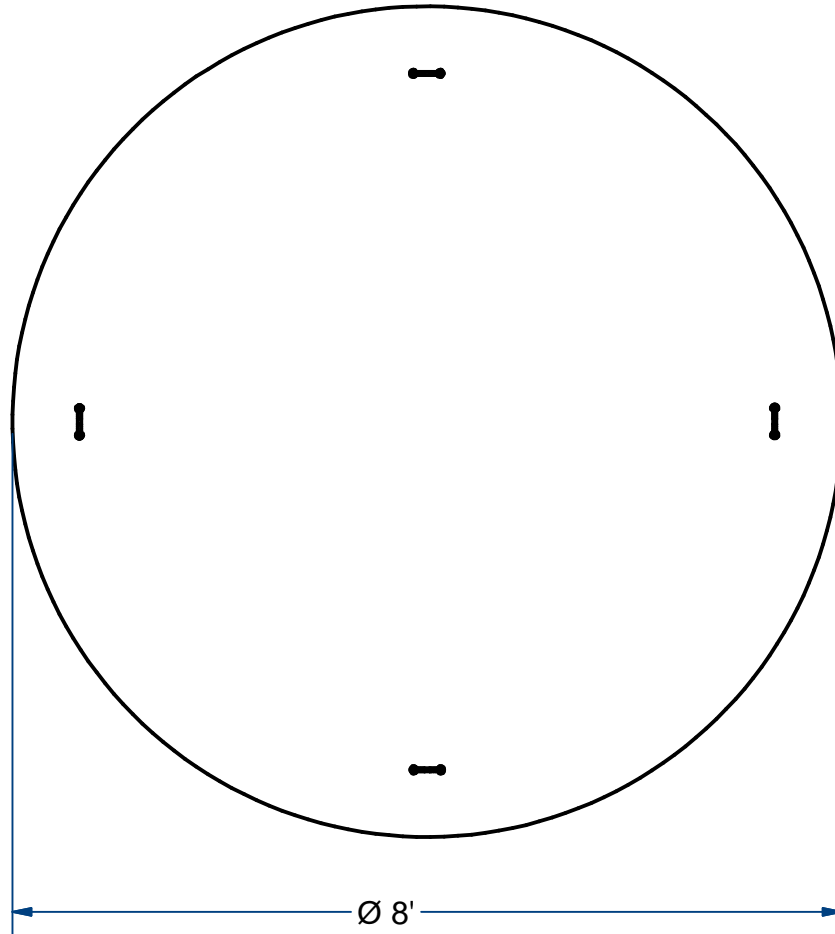
Sht 1 of 2

# ACME-SHOREY

PRECAST CONCRETE PRODUCTS

**NOTES:**

- 1.) USE #3 DEFORMED REBAR FOR THE REBAR CAGE.  
8" ON CENTER, BOTH WAYS.  
3" MINIMUM COVER FOR BOTTOM & SIDES.
- 2.) HOOKS TO BE Ø3/8"x7" LIFTING ANCHOR #LRA387G  
REBAR 4" OFF TOP OF PAD.  
LEGS TO BE TIED TO REBAR CAGE.



**NAME:** BIOCLERE MOUNTING PAD, 8'OD x 8" thk  
(USED ON BIOCLERE MODEL 24/30)

H-20

ITEM# BCP82

Concrete Minimum Strength: 5,000 p.s.i. at 28 days  
Steel Reinforcement: ASTM A615, Grade 60  
Design Loading: standard units - AASHTO - H20

WEIGHT 6,300

Lbs

C

DATE: 6-19-23

Ch 14 Pg 8.2 Sht 2 of 2