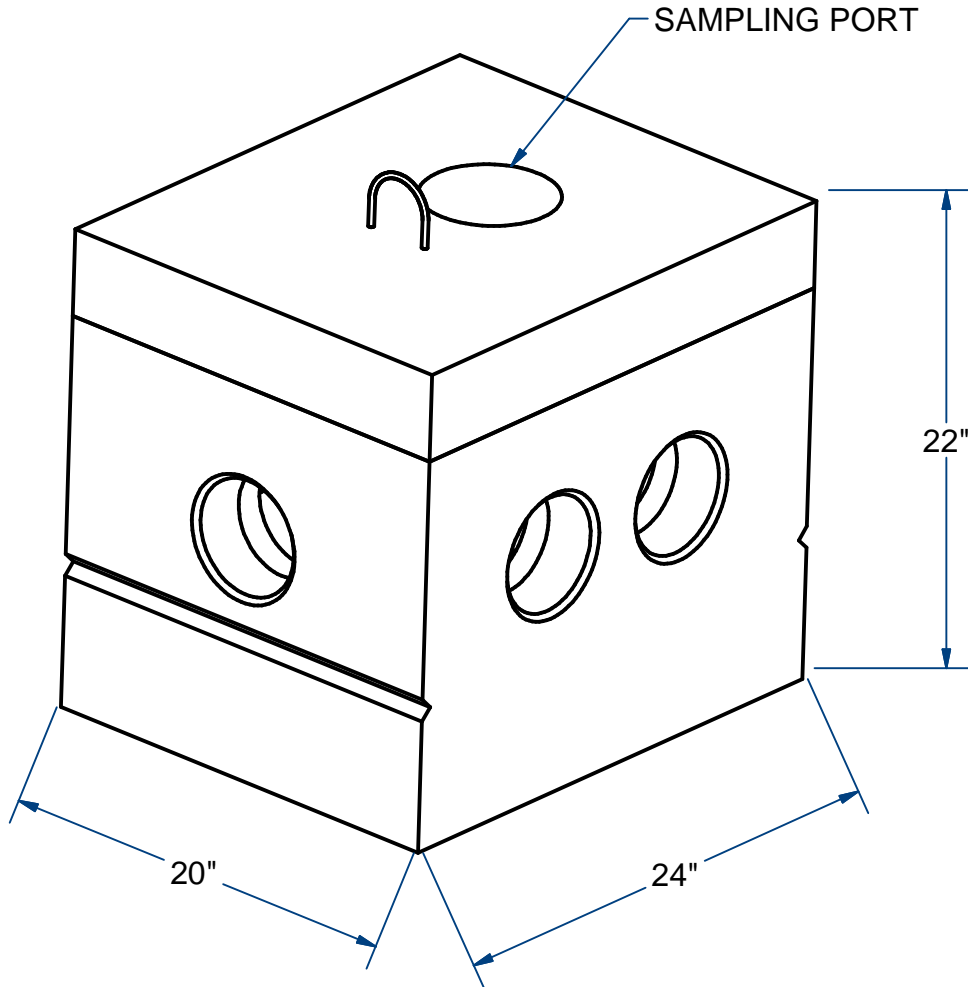


**NOTES:**

- 1.) USE DB52 BOX WITH SAMPLING COVER CDB52IP.
- 2.) INSPECTION BOX USED ON H2O FAST TANK PRODUCT LINE.



**INSPECTION BOX W/SAMPLING PORT  
( FAST TANK)**

**5 OUTLET**

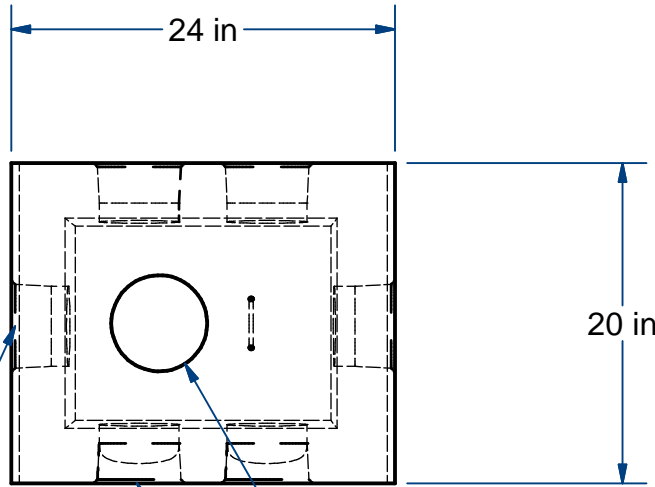
**H2O**

# ACME-SHOREY

PRECAST CONCRETE PRODUCTS

**NOTES:**

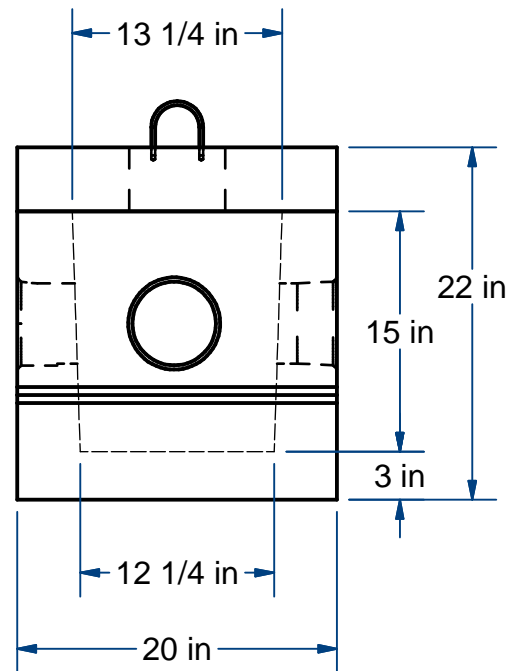
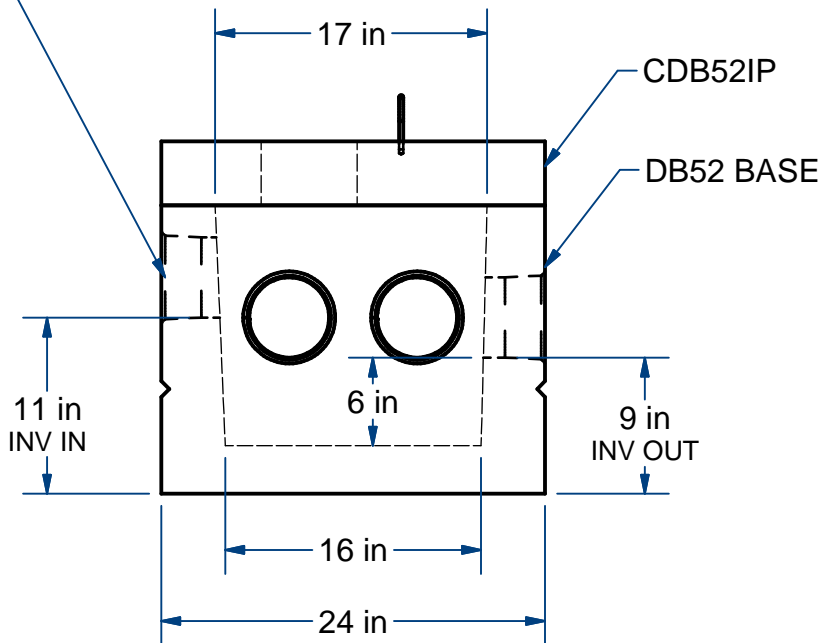
- 1.) USE DB52 BOX WITH SAMPLING COVER CDB52IP.
- 2.) INSPECTION BOX USED ON H20 FAST TANK PRODUCT LINE.



Ø6" PVC COUPLING IN COVER

(5) Ø4" POLY OUTLET KNOCKOUTS

(1) Ø4" POLY INLET KNOCKOUT



**NAME: INSPECTION BOX, 5 HOLE, W/SAMPLING PORT H-20**  
(FAST TANK PRODUCT ASSESSORY)

**ITEM# DB52SP**

Concrete Minimum Strength: 5,000 p.s.i. at 28 days  
Steel Reinforcement: ASTM A615, Grade 60  
Design Loading: standard units - AASHTO - H20

TOP 175 Lbs  
BOTTOM 500 Lbs

C DATE: 5-15-19  
Ch 14 Pg 2.9 Sht 2 of 2