

ACME-SHOREY

PRECAST CONCRETE PRODUCTS

WWW.ACME-SHOREY.COM

PHONE (508) 548-9607

FAX (508) 548-1664

CARVER, MA

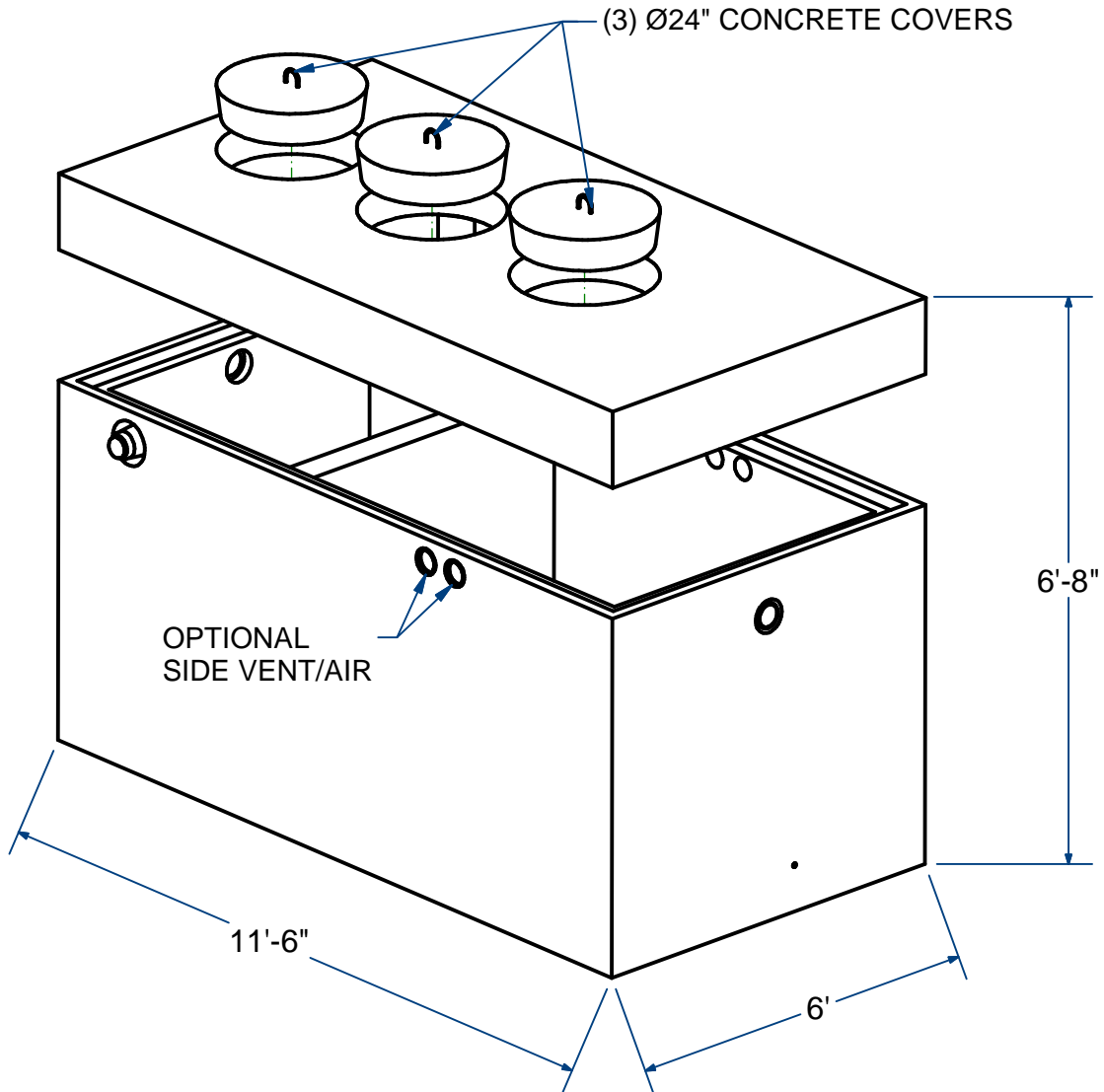
334 TREMONT STREET

HARWICH, MA

36 GREAT WESTERN ROAD

NOTES:

- 1.) SEAM SEALED WITH FLEXIBLE BUTYL RUBBER SEALANT.



FAST TANK, (MODEL'S 0.5,0.75,0.9,& 1.0)

INTERNAL MOUNT

H2O

FOR PROCESS INFO
PLEASE CONTACT:

BIO-MICROBICS (800) 753-3278 **FAST** wastewater treatment systems with SFR.

DISTRIBUTOR:
J&R Sales & Service
Raynham, Ma. 02767
(508) 823-9566
www.jrsalesinc.com

ITEM# FTIM152M

Wt. 27,000 Lbs

14-2.1

Sht 1 of 2

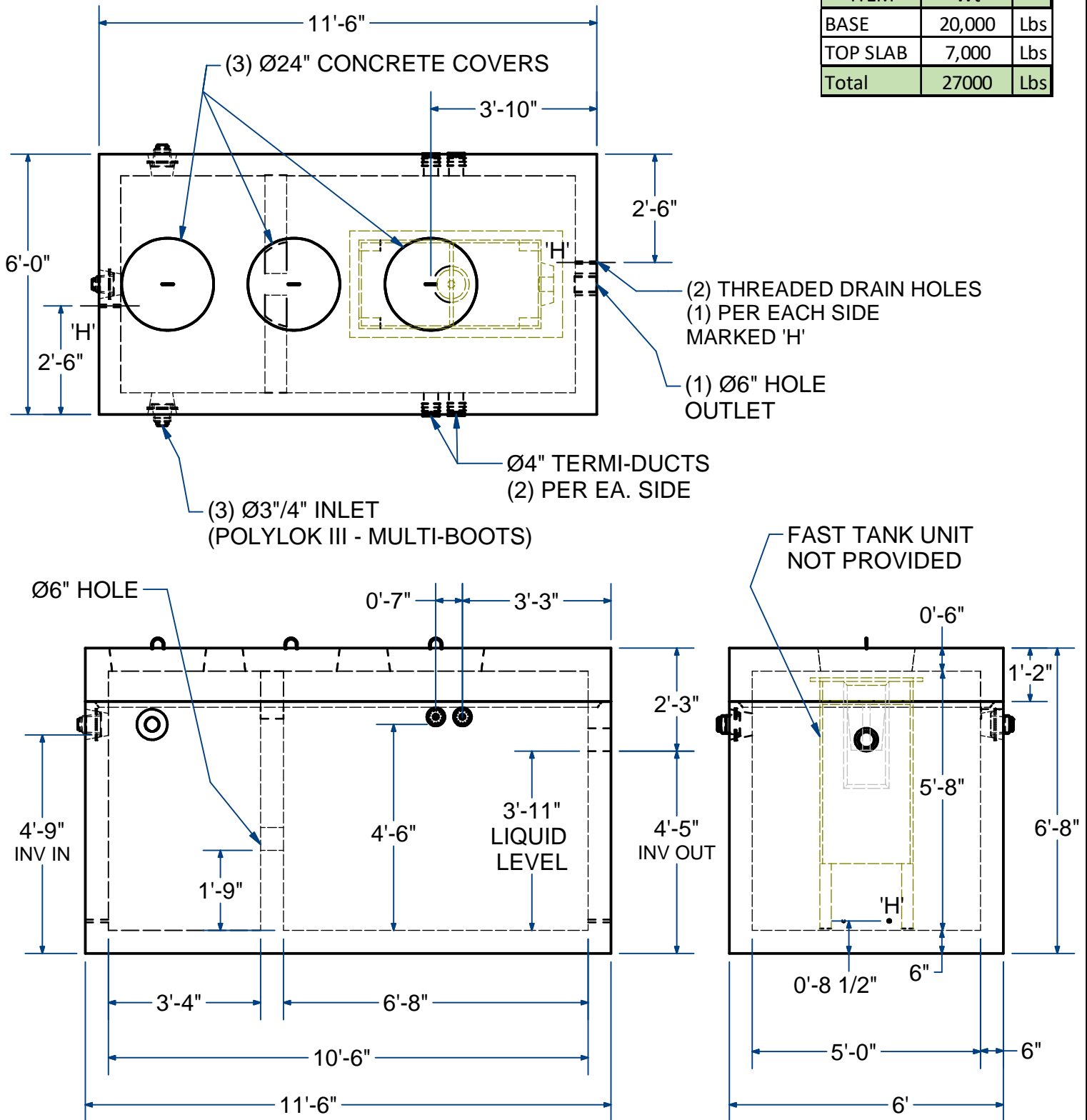
ACME-SHOREY

PRECAST CONCRETE PRODUCTS

NOTES:

- 1.) SEAM SEALED WITH FLEXIBLE BUTYL RUBBER SEALANT.

ITEM	Wt	
BASE	20,000	Lbs
TOP SLAB	7,000	Lbs
Total	27000	Lbs



NAME: FAST TANK, (0.5, 0.75, 0.9 OR 1.0) INTERNAL MOUNT
(2-COMPARTMENT 1500 Gallon TOTAL)

H-20

ITEM# FTIM152M

Concrete Minimum Strength: 5,000 p.s.i. at 28 days
Steel Reinforcement: ASTM A615, Grade 60
Design Loading: standard units - AASHTO - H20

TOP 7,000 Lbs
BOTTOM 20,000 Lbs

C

DATE: 4-5-23