

# ACME-SHOREY

PRECAST CONCRETE PRODUCTS

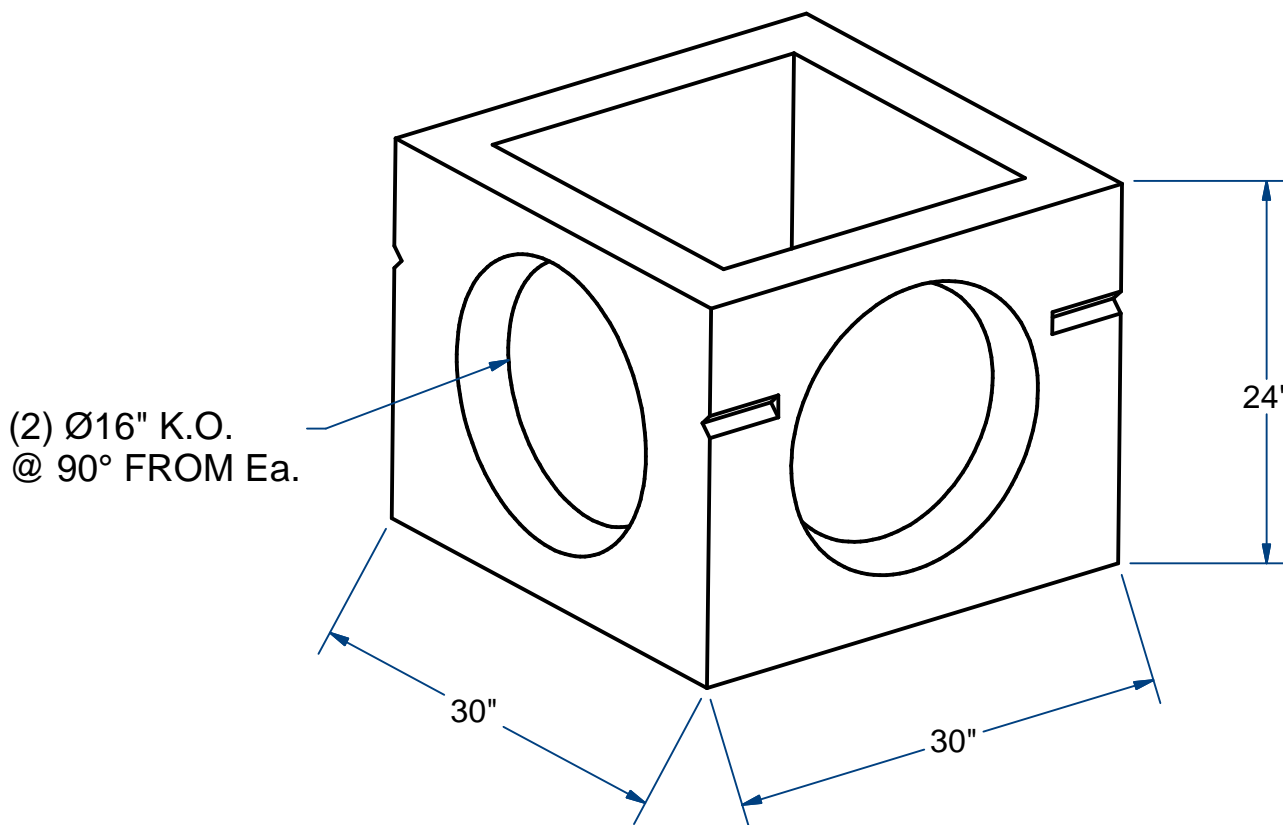
WWW.ACMESHOREY.COM

PHONE (508) 548-9607

FAX (508) 548-1664

CARVER, MA  
334 TREMONT STREET

HARWICH, MA  
36 GREAT WESTERN ROAD



## GUTTER INLET BOX

H20

30" X 30"

ITEM# GI

Wt. 975 Lbs

18-6.1

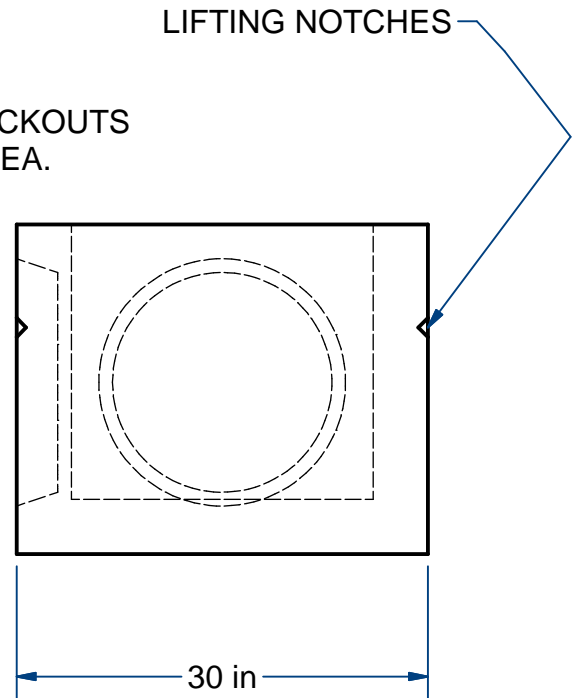
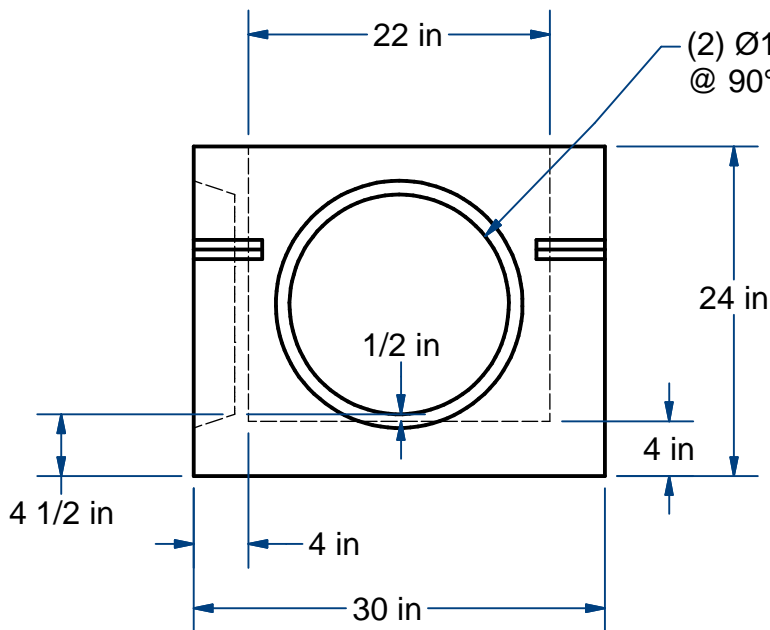
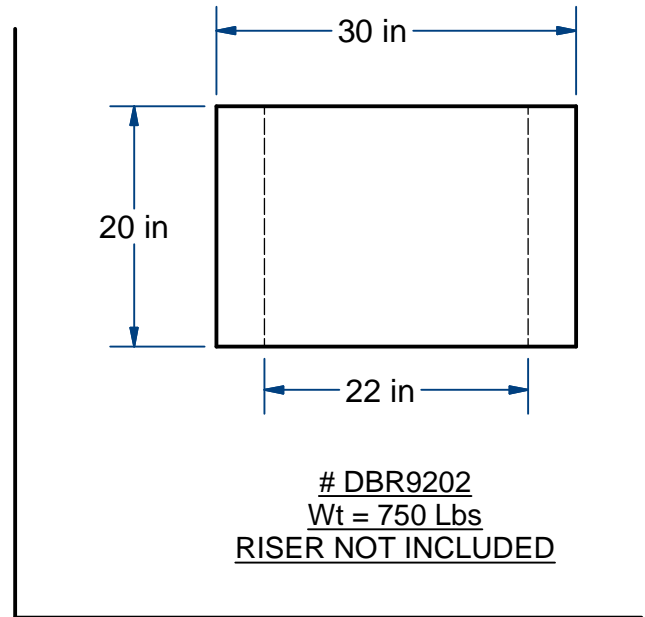
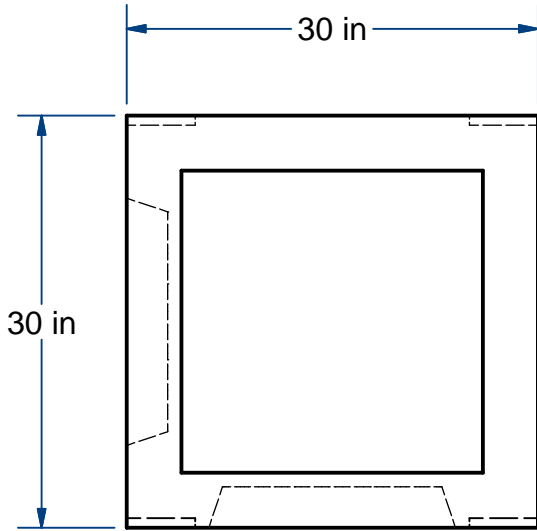
Sht 1 of 2

# ACME-SHOREY

PRECAST CONCRETE PRODUCTS

**NOTES:**

- 1.) INSTALL ON A LEVEL GRADE WITH A STABLE BASE OF 6" COMPACTED CRUSHED STONE.
- 2.) RISER NOT INCLUDED.



**NAME: GUTTER INLET BOX, W/(2) 16" KO'S**

**H-20**

**ITEM# GI**

Concrete Minimum Strength: 5,000 p.s.i. at 28 days  
Steel Reinforcement: ASTM A615, Grade 60  
Design Loading: standard units - AASHTO - H20

WEIGHT 975 Lbs

CH

DATE: 2-20-20