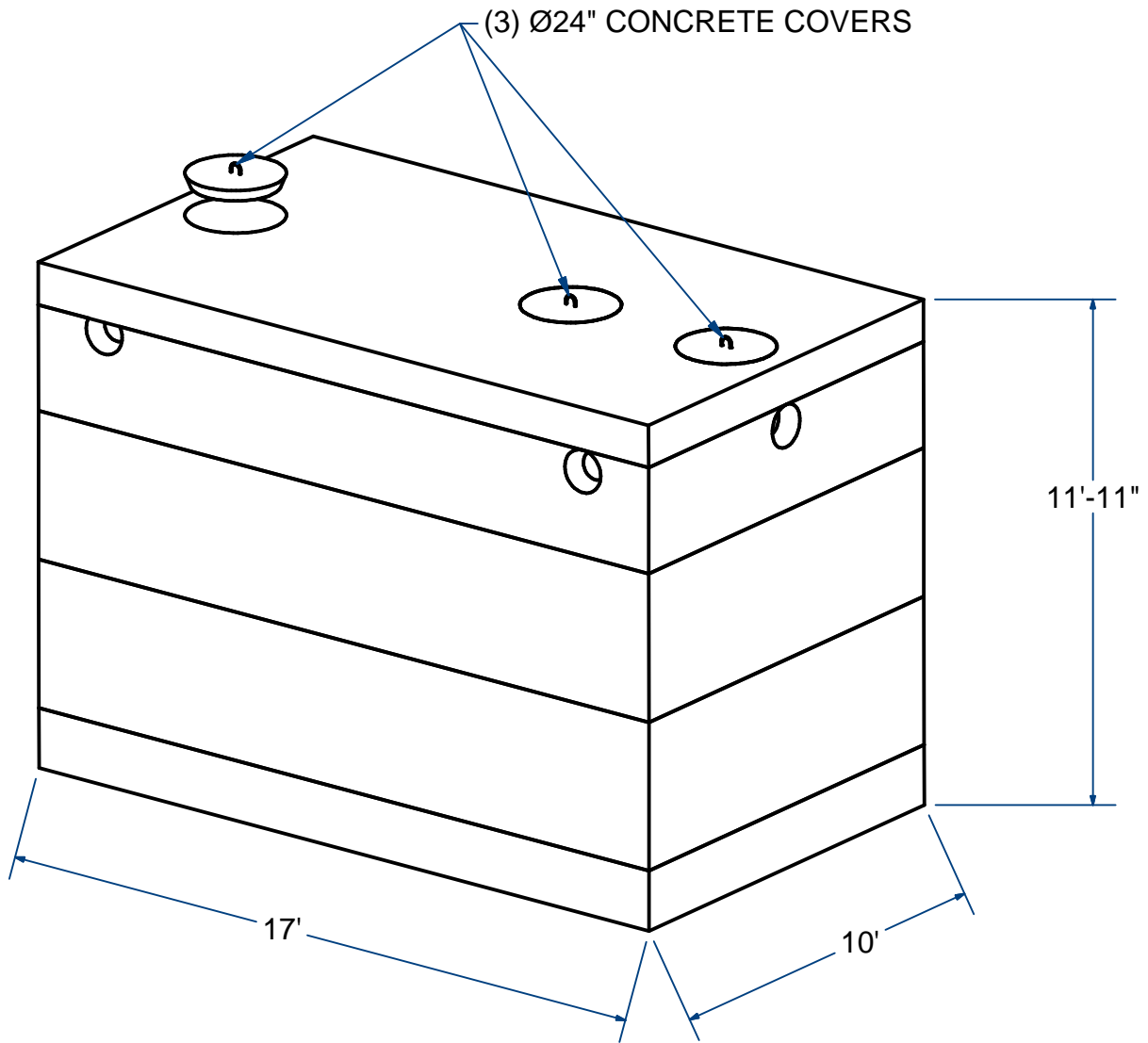


NOTES:

- 1.) SEAM SEALED WITH FLEXIBLE BUTYL RUBBER SEALANT.



LOW PROFILE SEPTIC TANK 10'X17'

H20

10,000 Gallon

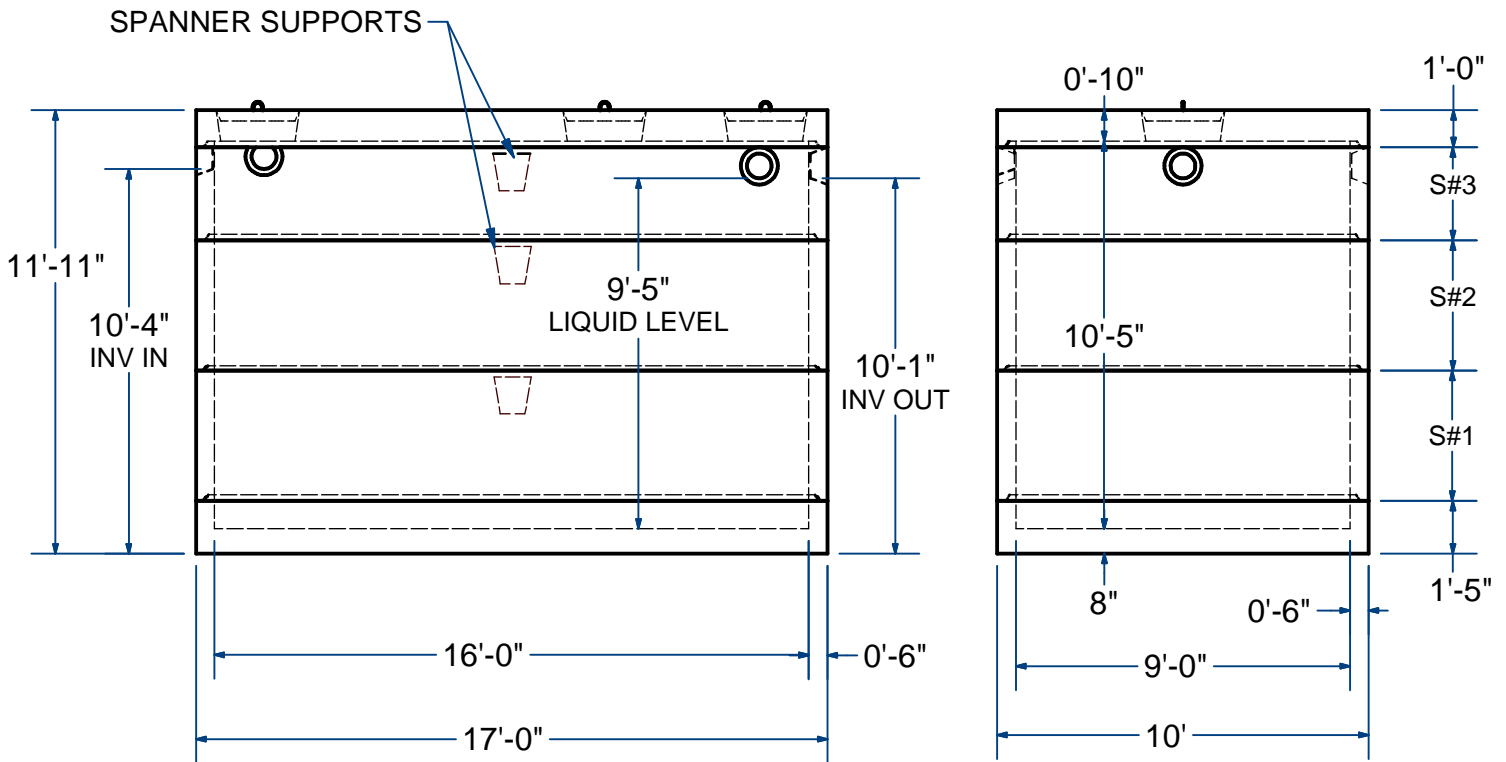
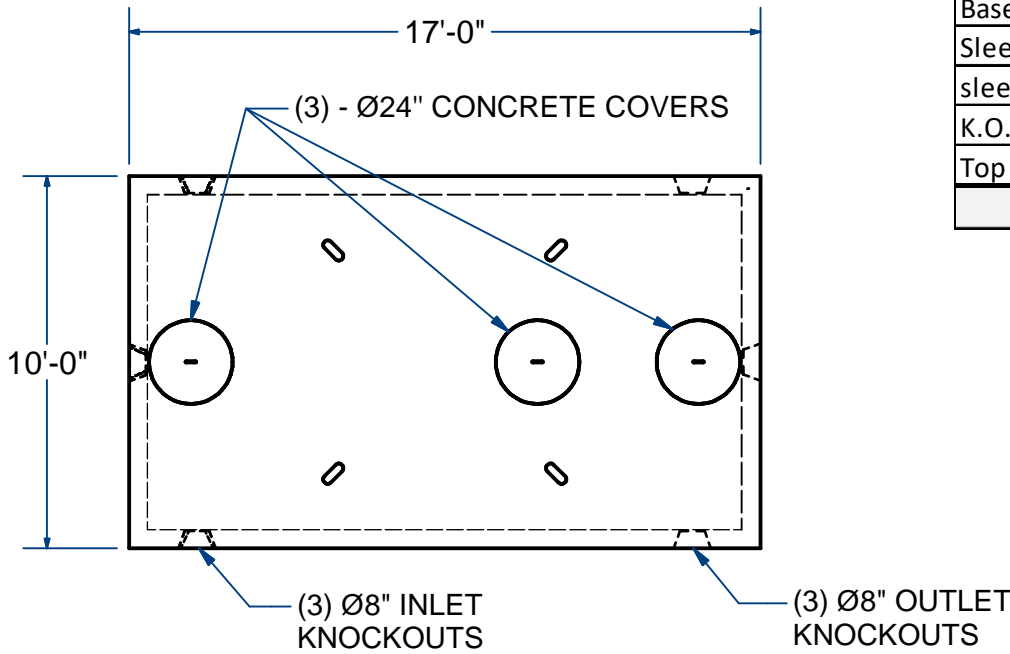
ACME-SHOREY

PRECAST CONCRETE PRODUCTS

NOTES:

1.) SEAM SEALED WITH FLEXIBLE BUTYL RUBBER SEALANT.

Each Section	Wt ea. (Lbs)
Base 17"	21,500
Sleeve#1- 42"	15,250
sleeve#2- 42"	15,250
K.O. Sleeve#3- 30"	11,250
Top 10"	21,250
	84,500



NAME: SEPTIC TANK 10' X 17', 10,000 Gallon (LOW PROFILE)		H-20	ITEM# ST1010	
Concrete Minimum Strength: 5,000 p.s.i. at 28 days Steel Reinforcement: ASTM A615, Grade 60 Design Loading: standard units - AASHTO - H20	WEIGHT 84,500	Lbs	H	DATE: 11-2-2019
			Ch 8	Pg 16.6 Sht 2 of 2