

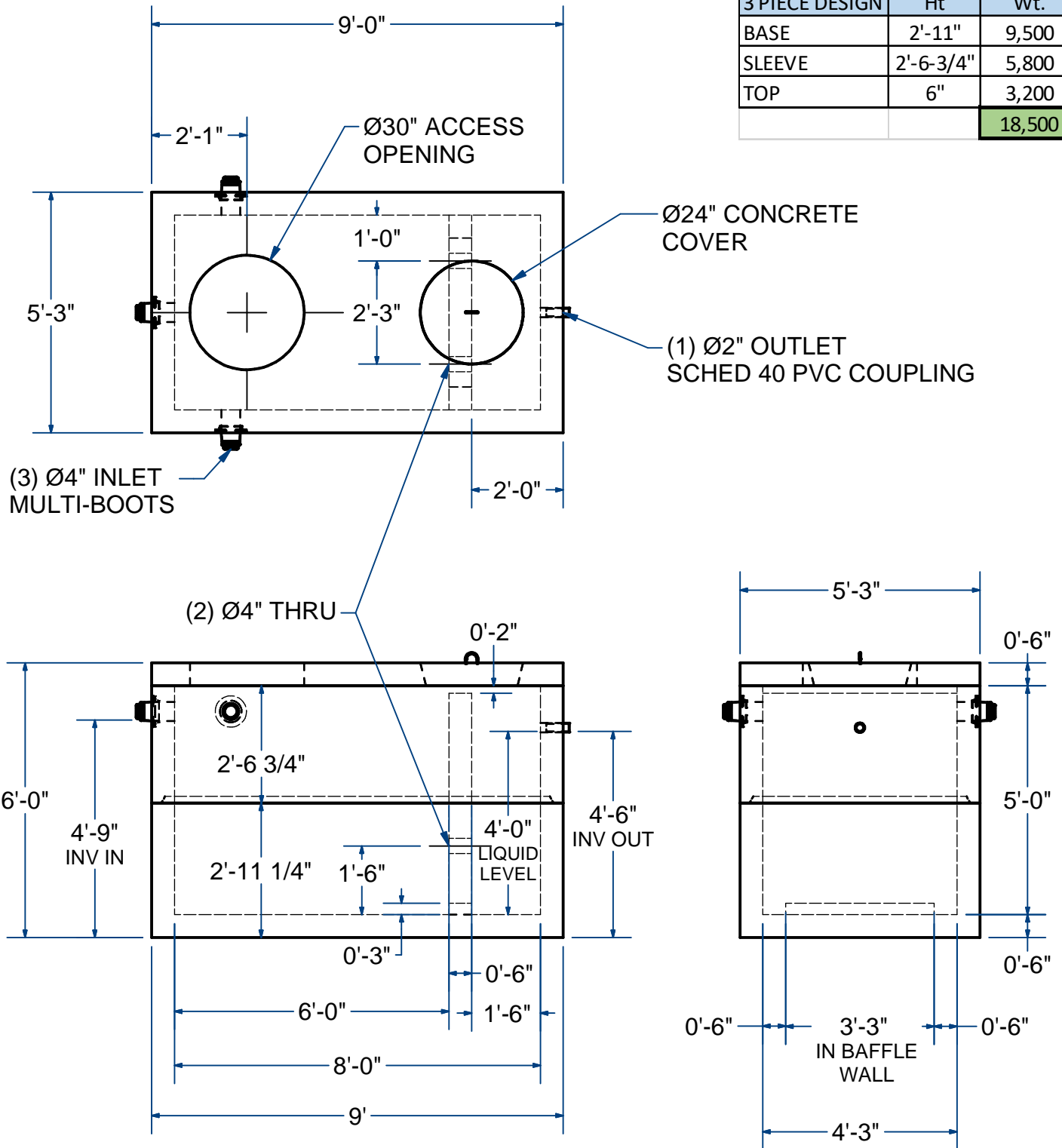
ACME-SHOREY

PRECAST CONCRETE PRODUCTS

NOTES:

- 1.) SEAM SEALED WITH FLEXIBLE BUTYL RUBBER SEALANT.
- 2.) 3-PIECE DESIGN WITH SLABTOP (FOR SYSTEM INSTALLATION).

3 PIECE DESIGN	Ht	Wt.
BASE	2'-11"	9,500
SLEEVE	2'-6-3/4"	5,800
TOP	6"	3,200
		18,500



NAME: STaar.50 SEPTIC TANK, 1000 Gallon, 3-PIECE
(2-COMP-SEPTI-TECH M400D PROCESSOR)

H-20

ITEM# STaar.50-102-3P

Concrete Minimum Strength: 5,000 p.s.i. at 28 days
Steel Reinforcement: ASTM A615, Grade 60
Design Loading: standard units - AASHTO - H20

WEIGHT 18,500 Lbs

C

DATE: 4-6-23